

# GRAND RAPIDS PUBLIC MUSEUM

## SCHEMATIC DESIGN PLAN

The Grand Rapids Public Museum leadership team recognizes that an ecologically diverse, accessible river's edge can become a unique educational opportunity, drawing the Museum's programming out-of-doors.

- ① A 'flume' water feature creates a summer play area that alludes to the historic canal and flume that once existed onsite.
- ② A lower trail allows seasonal access to the river's edge for habitat observation.
- ③ Multiple terraced gathering areas can become event spaces or outdoor classrooms.
- ④ An overlook activity lawn along the east wall accommodates Museum events or ArtPrize installations.
- ⑤ An expanded plaza between the carousel and Museum, allows lobby events to flow out-of-doors.
- ⑥ A 'treehouse' deck expands trail access, makes this area ADA accessible, and creates a raised river overlook and social space.
- ⑦ The 'woods' adventure play area illustrates the historic lumber industry while providing a unique river edge nature play experience within a lush riparian habitat zone below the 'treehouse' above.
- ⑧ A hidden 'observatory' beneath the carousel uses light projection to reflect astronomical maps and images during low water months.
- ⑨ The south event lawn and a new shared-use amphitheater provide flexible space for weddings, ArtPrize or other sculptural or performance installations, and informal gathering space.



## PRECEDENT IMAGERY - DESIGN & PROGRAM INTENT



① Flume water feature



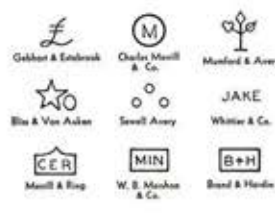
③ River classroom



⑥ Treehouse deck



⑦ 'Woods' adventure play



⑦ 'Woods' - Historic lumber brands marked tree stumps can merge learning and play



⑨ New shared use amphitheater



Conceptual rendering of Grand Rapids Public Museum



RIVER FOR ALL  
GRAND RIVER  
CORRIDOR

IMPLEMENTATION  
PLAN AND RIVER  
DESIGN GUIDELINES

FINAL DESIGN  
RECOMMENDATIONS

